

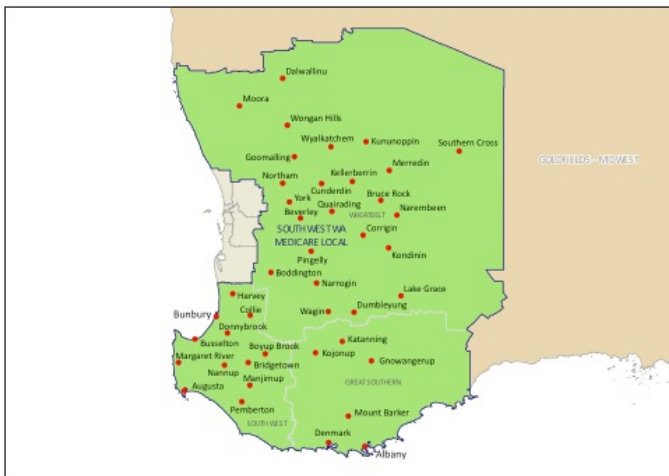
Opportunities to work for the South West WA Medicare

A nation-wide network of Medicare Locals is a key component of the Australian Government's National Health Reforms. The first of Australia's new network of primary health care organisations – Medicare Locals – commenced from 1 July 2011. The South West WA Medicare Local is one of nineteen Medicare Locals throughout Australia established in this first round.

Medicare Locals:

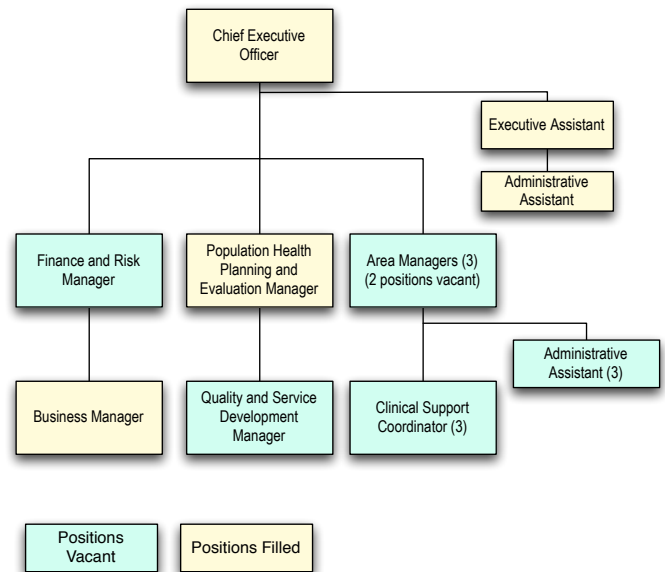
- ▶ Are primary health care organisations established to coordinate primary health care delivery and tackle local health care needs and service gaps.
- ▶ Have been set up to drive improvements in primary health care and ensure that services are tailored to meet the needs of local communities.

The South West WA Medicare Local is establishing offices in Albany, Busselton and Northam and is now ready to employ staff.



The following positions are open for recruitment:

- ▶ Finance and Risk Manager
- ▶ Quality and Service Development Manager
- ▶ Area Manager Albany
- ▶ Area Manager Northam
- ▶ Clinical Support Coordinator (Three positions - Busselton, Northam and Albany)
- ▶ Administrative Assistant (Three positions - Busselton, Northam and Albany)



How to Apply

Job descriptions will be available to download from the South West WA Medicare Local website.

www.sw-medicarelocal.com.au

Applications should address the selection criteria for the specific role and should be emailed or posted to the South West WA Medicare Local office in Albany.

PO Box 5750 ALBANY WA 6332

suzanne@sw-medicarelocal.com.au

Why work for the South West WA Medicare Local ?

- ▶ Play an active role in the planning and implementation of primary health care in our Region.
- ▶ Join a vibrant team that is keen to make a difference to the health outcomes of people living in the Region.
- ▶ Be at the forefront of the Medicare Local health reforms playing an active role in improving services in the areas of:
 - After hours primary health care.
 - eHealth and telehealth.
 - Aboriginal and Torres Strait Islander Health.
 - Mental primary health care.
 - Aged care.
 - Population health.

Would you like to know more? Visit our website at www.sw-medicarelocal.com.au or contact us at: communicate@sw-medicarelocal.com.au